



浪漫 北海道  
7D  
5N  
ROMANTIC HOKKAIDO

登別 | 函館 | 小樽 | 札幌  
NOBORIBETSU | HAKODATE | OTARU | SAPPORO





## 第1天：吉隆坡 ✕ 千岁

于吉隆坡国际机场集合办理登记手续，然后乘搭班机飞往日本。

## 第2天：千岁 - 82公里 - 登别温泉

### 伊达时代村

踏进这座主题公园，犹如穿越时空进入日本江户时代。您可以欣赏富有江户情趣的平民居住区，以及豪华壮丽的武士住宅等木制建筑。

### 登别地狱谷

这里每分钟涌出三千公升温泉水，直径长达450米，冒着滚滚白烟。从观光步道可近距离看到间歇泉和滚烫的泉水。

## 第3天：登别温泉 - 197公里 - 函馆

### 五棱郭公园

它是获得国家指定为特别史迹的一个自然景观丰富的公园，四季美景让人回味无穷。

### 金森红砖仓库

在这里可以观光购物，品尝甜点。也可以到港湾去漫步赏景，吹吹海风。

### 函馆山夜景（含缆车）

乘坐缆车到山顶的展望台，您可以俯瞰函馆市区及周边的山海美景。被《米其林绿色指南·日本》评为三星的景观。（视天气情况而定）

## 第4天：函馆 - 160公里 - 洞爷

### 函馆早市

在北海道最大的海鲜批发市场之一，云集了约有250家店铺经营海鲜特产，您可以品尝到刚刚捕获的海鲜。

### 洞爷湖

它是一座火山口湖，亦是不冻湖。即使在冬天，湖面也不会冻结。

### 熊牧场

熊牧场内居住大约100只纯种北海道棕熊。您可以购买苹果或饼干喂食棕熊。

### 昭和新山（拍照留念）

昭和初年所爆发的活火山，故而得名。它被归类为世界上罕见的岩塔型火山，在红褐色的山脉中仍能见到地热白烟喷出。

### 季节限定

★ 洞爷湖照明隧道：(11月10日 - 2月28日)

\* 冬季观光的亮点，长约70米，由40万颗LED灯泡点亮，创造梦幻彩灯世界。

## 第5天：洞爷 - 113公里 - 小樽 - 38公里 - 札幌

### 小樽运河

曾经是小樽港口运输区，如今已转型成观光景点区，是小樽市最著名的地标。

### 小樽步行街

结合漫步、选购精品和品尝甜点的好地方。这里涵盖著名的北一哨子玻璃饰品专卖地，音乐盒博物馆、美术馆、咖啡厅、冰淇淋和甜点店。

### 田中酿酒厂

体验小樽丰富的清酒文化以及品尝清酒。

### 狸小路

札幌市著名的购物街，拥有超过150家的店铺，包括饮食、服饰、药妆、土产店等等。途经北海道最大的不夜城——**蒲夜不夜天**。

## 第6天：札幌

### 大通公园

这里也被称为办公楼街区中的绿洲，是一个让市民放松身心的场所。这里一年四季都会举行北海道节庆活动，宏伟的**札幌电视塔**也坐落在此。

### 札幌海鲜市场

您可以在这里买到美味且性价比高的各种海鲜。

### 白色恋人公园

以白色恋人巧克力为主题的公园，园内设有可以享用甜点的咖啡厅和适合拍摄纪念照的英式庭园。

### 三井奥特莱斯购物中心

除了国际品牌以外还有许多日本本土品牌进驻，不定期还有超值的促销活动。

## 第7天：千岁 ✕ 吉隆坡

今天，我们将乘搭当日班机返回家园。

※ 行程可能会以最终确定的航班而前后调动。



洞爷湖照明隧道  
Lake Toya Illumination Tunnel





## D1: KUALA LUMPUR ✕ CHITOSE

Assemble at Kuala Lumpur International Airport for departure flight to Japan.

## D2: CHITOSE – 82km – NOBORIBETSU

### 📍 Date Jidaimura

A historic theme park highlighting the Edo Period, one of the most attractive eras in Japanese history. Admire the residential area with wooden buildings and luxurious residence of samurai commander.

### 📍 Jigokudani

With a diameter of about 450 meters, 3 thousand litres of spring water gush out every minute from the crater. Along the valley, you can have a close-up view of hot steam vents and sulfurous streams.

## D3: NOBORIBETSU – 197km – HAKODATE

### 📍 Goryokaku Park

It is a park rich in natural scenery designated as a special historic site by the country, and the beautiful scenery of the four seasons is unforgettable.

### 📍 Kanemori Red Brick Warehouse

You can either sightseeing, shop or have a tea break. Besides, you can also stroll along the bay for outdoor view while enjoying refreshing sea breeze.

### 📍 Mt. Hakodate Night View (Included Ropeway)

You can overlook the beautiful scenery of the city of Hakodate and the surrounding mountains and seas. Awarded as a three-star view in "Michelin Green Guide Japan". **(Subject to weather conditions)**

## D4: HAKODATE – 160km – TOYA

### 📍 Hakodate Morning Market

It is Hokkaido's largest seafood wholesale market, there are about 250 shops selling seafood specialties here, and you can taste freshly caught seafood.

### 📍 Lake Toya

Japan's 3rd largest volcanic caldera lake. This lake never freezes, even in winter when the temperature falls quite drastically.

### 📍 Bear Ranch

About 100 purebred Hokkaido brown bears live in the bear ranch. You can buy apples or biscuits to feed the bears.

### 📍 Mt. Showa (Photo Stop)

It is named after the active volcano that erupted in the early Showa era. It is classified as a rare rock tower volcano in the world, and geothermal white smoke can still be seen in the reddish-brown mountains.

### Seasonal Arrangement:

★ Lake Toya Illumination Tunnel: (10 Nov- 28 Feb)

On the square of Toyako Hot Spring Street, there is a 70-meterlong coloured light tunnel built with about 400,000 neon bulbs.

## D5: TOYA – 113km – OTARU – 38km – SAPPORO

### 📍 Otaru Canal

It used to be a transportation hub, but now it has transformed into a tourist attraction and landmark of Otaru.

### 📍 Otaru Handicraft Street

A perfect place for a stroll, souvenir shopping and to satisfy your sweet tooth! Renowned for its glass handicrafts, music box museum, art gallery, ice-cream & dessert shops.

### 📍 Tanaka Brewery

Experience Otaru's rich sake culture and sake tasting.

### 📍 Tanukikoji Shopping Arcade

Have fun shopping here with more than 150 shops ranging from souvenirs, clothing, cafes, and snacks. Drive pass **Susukino**, Sapporo's most famous nightlife and entertainment area.

## D6: SAPPORO

### 📍 Odori Park

Located in the heart of Sapporo, it is the popular venue for various festivals throughout the year. The 147.2 meters high **Sapporo TV Tower** is an attractive landmark of the park.

### 📍 Sapporo Seafood Market

Here you can buy a variety of delicious and cost-effective seafood.

### 📍 Shiroikoibito Park

The park themed around Shiroi Koibito chocolate features a cafe where you can enjoy sweets and an English-style garden perfect for taking commemorative photos.

### 📍 Mitsui Outlet Mall

Besides international brand, you can find local Japanese brand as well. From time to time, there will be added value promotions!

## D7: CHITOSE ✕ KUALA LUMPUR

Proceed to airport for your flight back home and big farewell to Japan.

※ Sequence of the itinerary is subject to change according to the final flight confirmation.



函馆早市  
Hakodate Morning Market





## 行程亮点 HIGHLIGHT

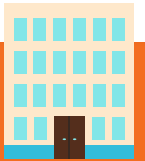
<ul style="list-style-type: none"> <li>温泉体验</li> <li>伊达时代村</li> <li>登别地狱谷</li> <li>五棱郭公园</li> <li>金森红砖仓库</li> <li>函馆山夜景</li> <li>函馆早市</li> <li>洞爷湖</li> <li>熊牧场</li> </ul>	<ul style="list-style-type: none"> <li>昭和新山</li> <li>小樽运河</li> <li>小樽步行街</li> <li>田中酿酒厂</li> <li>狸小路</li> <li>大通公园</li> <li>札幌海鲜市场</li> <li>白色恋人公园</li> <li>三井奥特莱斯购物中心</li> </ul>	<ul style="list-style-type: none"> <li>Onsen Experience</li> <li>Date Jidaimura</li> <li>Jigokudani</li> <li>Goryokaku Park</li> <li>Kanemori Red Brick Warehouse</li> <li>Mt. Hakodate</li> <li>Hakodate Morning Market</li> <li>Lake Toya</li> <li>Bear Ranch</li> </ul>	<ul style="list-style-type: none"> <li>Mt. Showa</li> <li>Otaru Canal</li> <li>Otaru Handicraft Street</li> <li>Tanaka Brewery</li> <li>Tanukikoji Shopping Arcade</li> <li>Odori Park</li> <li>Sapporo Seafood Market</li> <li>Shiroikoibito Park</li> <li>Mitsui Outlet Mall</li> </ul>
--	---	--	---



## 美食 GOURMET

酒店自助餐 / 日式套餐 / 日式烧烤 / 三大北海道螃蟹任吃

Hotel Buffet / Japanese Set / Japanese BBQ / 3 Kind Hokkaido Crab & Buffet



## 酒店 HOTEL

			早餐 Breakfast	午餐 Lunch	晚餐 Dinner
D1	-	-	-	-	-
D2	登别 (1 晚) Noboribetsu (1 Night)	登别石水亭酒店或同级 Noboribetsu Sekisuitei Hotel or similar	机上用餐 Meal on Board	X	✓
D3	函馆 (1 晚) Hakodate (1 Night)	函馆站前柔捷阁酒店或同级 La'gent Stay Hakodate Hotel or similar	酒店 Hotel	✓	X
D4	洞爷 (1 晚) Toya (1 Night)	洞爷万世阁酒店或同级 Toya Manseikaku Hotel or similar	酒店 Hotel	✓	✓
D5	札幌 (1 晚) Sapporo (1 Night)	札幌东急REI酒店或同级 Sapporo Tokyu Rei Hotel or similar	酒店 Hotel	✓	✓
D6	成田 (1 晚) Narita (1 Night)	成田国际花园酒店或同级 International Garden Narita Hotel or similar	酒店 Hotel	✓	✓
D7	-	-	酒店 Hotel	机上用餐 Meal on Board	-



北海道美食 (自费)  
Hokkaido Gourmet (Own expense)



三大北海道螃蟹任吃  
3 Kind Hokkaido Crab & Buffet



日式拉面套餐  
Japanese Ramen Set

### 旅行必备:

护照或签证 - 团员有责任确保护照有效期需至少6个月(从返程日期算起), 并且取得必要的签证和准证。  
旅游保险 - 出发前, 建议您购买全面的旅游保险。

### 条规:

- 行程、膳食、酒店住宿、交通和自费项目可能会有所更动, 恕不另行通知。
- 若出现无法预测的特殊情况特别是在旅游旺季期间, UVSB将保留更改或取消行程的权利。
- 若UVSB的宣传手册或任何传播媒介, 出现任何形式的印刷失误或遗漏, 本公司一概不负责, 并且保留更正的权利。
- 每位参与UVSB团的成员, 必须为自身安全或行为负责。若出现无法预测的特殊情况 (例如: 交通延误/取消、疾病、天气、示威、战争等等), 因而引发额外支出的问题, UVSB一概不负责, 旅客需自行承担额外的费用。
- 详情条规, 请参阅手册背面或浏览 <https://ubingo.my/home/terms.php>
- 以上图片仅供参考, 请以实物为准。

备注: UVSB为UbinGO Vacations Sdn Bhd.

### 日本团 - 附加条规:

- 所有行程以中文讲解为主。若有需要, 将提供简单的英语翻译。
- 如预订三人间, 提供的额外床垫为滚动式折叠床。
- 团费仅适用于大马公民, 外国公民则需缴付额外费用。

### Travel Essentials:

Passport & Visas - Each tour member is responsible to ensure their passport is valid for at least six (6) months from the return date of the trip and all necessary visas and permits have been acquired.  
Travel Insurance - It's essential that you take out comprehensive travel insurance before travel.

### Terms & Conditions:

- Itineraries, meals, hotels, transportation and optional tour are subject to change without prior notice
- UVSB reserves the right to make changes to or cancel the itinerary at any time due to unforeseen circumstances, especially during peak periods or in the event of a force majeure.
- UVSB is not responsible for omissions, printing and/or presentation errors in brochures or in any media where such information may be presented; UVSB reserves the right to make corrections as required.
- Every person participating in UVSB's tours shall travel at his/her own risk. UVSB shall not be held liable to any person for additional expenses that may be incurred due to delays or changes in any transport services, sickness, weather, strikes, war or other causes.
- For other terms & conditions, refer overleaf of invoice or visit <https://ubingo.my/home/terms.php>
- All pictures shown are for illustration purpose only.

Note: UVSB refers to UbinGO Vacations Sdn Bhd.

### Japan Tours - Additional Terms & Conditions:

- Tours are conducted in Mandarin, with simple translation in English if required.
- For booking triple-share rooms please note that additional bed is based on "roll-away" bed.
- Tour fare quoted is for MALAYSIAN, the non-Malaysian surcharge applied.

### Tentative Flight Details - Subject to Change

--

For Agent Use Only:

Updated Date: JUL 2024